



Six Elves Deliver Fun and Games to Woodburn Rally

December 2-4 found 31 GMC Cascader coaches moored in the frosty Woodburn RV park. Elfin hosts Bob and Elaine Fry teamed up with Clem and Grace Politiske and Glen and Ruth Diers to manage all the logistics of food, fiddlers, a field trip to a manufactured home factory, fun and fitting us all into a very tight space in the park's club house.



Fry, Politiski and Diers elves preside over hot chowder and chili.

Friday night the elves dished up a delicious chowder/chili feed complete with all the fixings. Christmas cookies provided by all participants



Bingo management requires intense concentration!

made dessert delightfully anticlimactic.

The real anticlimax was the bingo session following dinner. With professional flair, Grace Politiske and Bob Fry presided over cut-throat bingo competition and the awarding of

Woodburn rally report continues on page two.

Cascaders to Retreat from Deepest Winter to Warm, Friendly Fun of Tokeland, WA, Rally

February's rally brings Cascaders to the small community of Tokeland, WA, where emphasis will be on local hospitality, beautiful coastal views and the inevitable fun and foolishness that Cascaders cook up when they gather

around to swap tales, learn new crafts and explore the wonders of GMC coach technical problems and possibilities. For information, contact hosts Jim and Sheryl Scolman or co-hosts, Joy and Bud Sunderlund.

Rally Schedule 1995

DATES	LOCATION	SITE	HOSTS
February 17-20	Tokeland WA	Bay Shore RV Park	Scolmans, Frydenlunds
Mar/Apr 31-2	Newport OR	Pacific Shores RV Park	April Fool hosts

Additional rallies are scheduled throughout 1995; watch for details in future issues of the *GMC Cascaders News*.

On the Road Again...

- If you are one of the few hold-outs, send in your dues! The past due date is January 1, 1995
- Wallowa Lake rally reservations for next August must be in the hands of John and Lauree (503-938-5981) before January 1st. You can not acquire a campsite later as they will be sold out!
- Fred and Phyllis Lyngard, Box 250, Galway, NY 12074, have requested Cascader help in locating a GMC coach to buy and even joining the Cascaders. They are retiring and interested in a new life in a GMC. Contact them if you can help.

GMC CASCADERS NEWS

- President** Becky Ragsdale
21412 98th Ave S
Kent, WA 98031
206-854-1642
- 1st Vice President**
Carol Baxter
PO Box 5090
Dockton, WA 98070
206-463-9045
- 2nd Vice President/Wagon Master**
Glenn Diers
6535 Seaview NW #601B
Seattle, WA 98117
206-782-2131
- Secretary/Newsletter Editor**
Priscilla Hardin
2970 NW Hayes Ave,
Corvallis, OR 97330
503-752-3811
- Treasurer** Ruth Diers
6535 Seaview NW #601B
Seattle, WA 98117
206-782-2131

The GMC Cascader News is published six times annually. GMC coach owners interested in membership should contact any officer for information.

Woodburn rally notes continued from page one

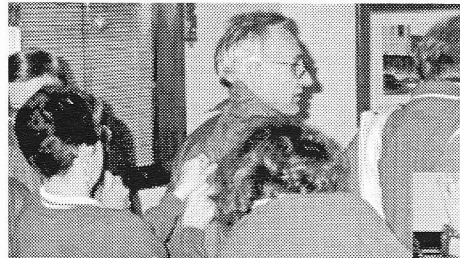
"generous" prizes. More prizes went to the winners of such esoteric contests as... gentlemen unscrambling the pile of ladies' shoes and racing to put them back on their wives, and ladies stripping jackets off of their gentlemen and racing to put 'em on again... backwards.



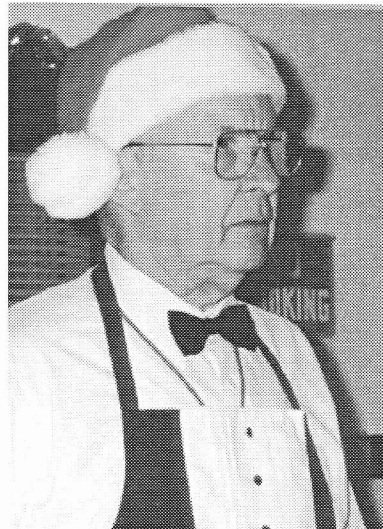
Prince Charmings fitting the glass slippers onto their lovely Cinderellas.



Editors Note: The "rump session" depicted above replaces our usual images of bending over GMC rear wheel assemblies—it was too cold for outdoor technical seminars.



Above and right: Becker and Morris teams show great form during the "jacket-athon."



Impresario Bob Fry supervises his contestants closely. Even state lottery directors may not take their responsibilities as seriously.



Glenn Diers is dubbed Sir Grinch by the Ruth elf. Note: it takes one plastic cup and one plastic soup bowl stuffed inside Santa hat to make it stand up tall like the Grinch's.



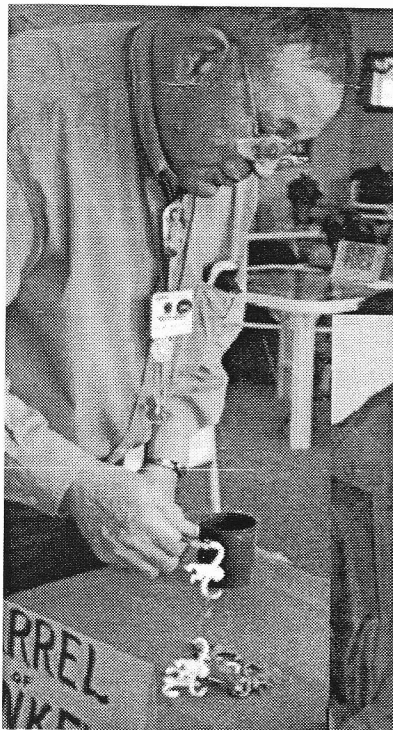
Fun and Games Fill Saturday am Agenda



Preparing for the Penny Pitch, Becky Ragsdale demonstrates penny pinching skills.



Henry (left) and Lola (right) Abrahams try their hands at games of skill. Terry Boyd (below) works at mastering the tricky intricacies of Flippers, a modern version of tiddley-winks.



Henry (left) and Lola (right) Abrahams try their hands at games of skill. Terry Boyd (below) works at mastering the tricky intricacies of Flippers, a modern version of tiddley-winks.

Saturday's fruit and pastry breakfast came complete with directions for the old fashioned (?!?) game competition to follow.

Cascaders toted their own score sheets as they competed in games of skill and chance. Winners were announced and prizes awarded at Saturday evening's potluck dinner and entertainment (see a back panel).

Games included ring toss, penny pitch (top left), Barrel o'Monkeys (middle left), Flippers (bottom left), Pick-up Sticks (top right), clothespin drop (middle right), travel poker, Ski Ball, card toss, and several more.



This activity was fun and had "something for everyone."

Thanks to Frys, Politikes and Diers for careful planning and an idea that could be repeated at some other winter rally in the future.

Cascader Gothic with Bud and Joy Sunderlund



A remarkable discovery made during our tour of the Silvercrest factory... we have in our midst a more Joyful version of American Gothic than Grant Wood ever dreamed of when he made his original painting!

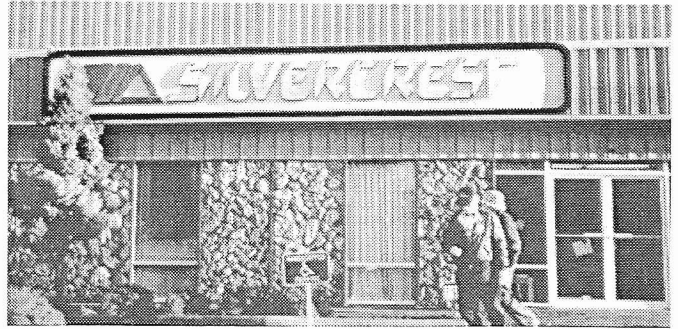
Our account of the Woodburn rally would not be complete with a note that Will Towne dropped in on Sunday for a brief but welcome visit.



Cascaders Learn How Manufactured Homes are Assembled

Ed Bradley of Silvercrest Homes greeted Cascaders at the plant with cookies and an insurance form before leading us on a tour of the Woodburn operation. Ed explained that the upper quality units produced there reflect the great progress made by the industry in use of materials and technology. Designed for liveability, warmth and looks, another imperative is roadability!

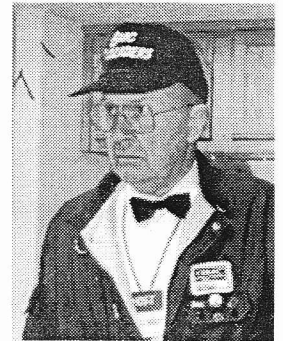
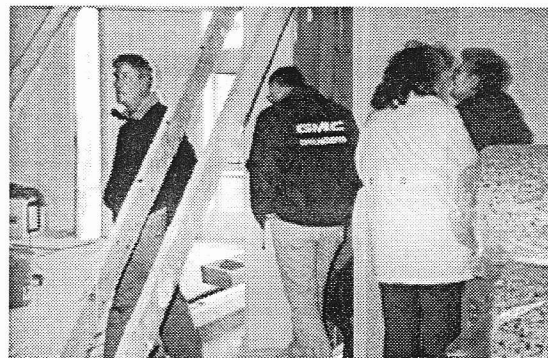
Homes are assembled in two or three long sections for hauling to the permanent installation site pre-



Silvercrest main entrance (above); Cascaders check out home sections...up, down and sideways (below); Bob Fry worries (right)...Elaine wants to buy one!



Ed Bradley explains floor plans (above).



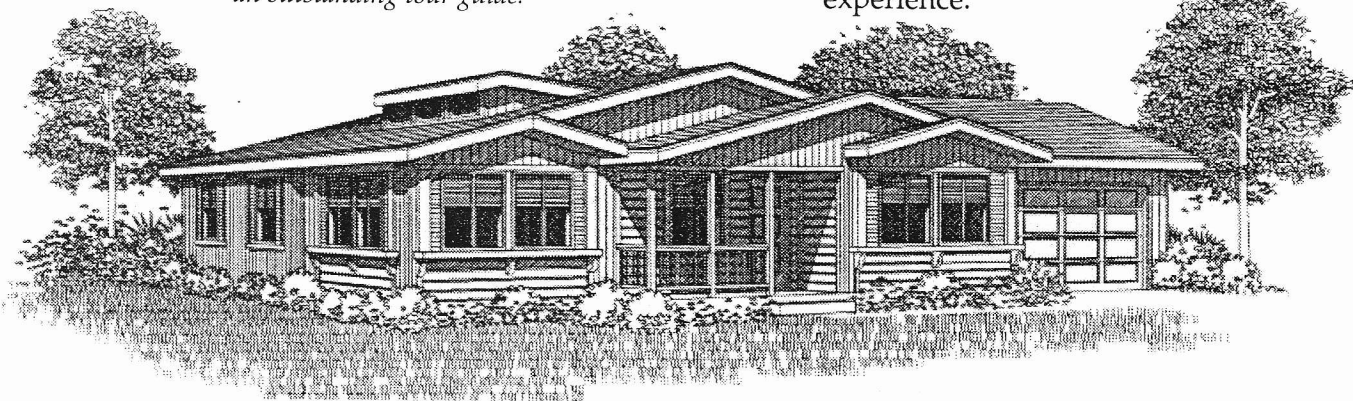
Elaine Fry (right) practices plant safety drill – call 911 and grab the fire extinguisher all at once.



Cascaders question Bradley over a pile of wallboard. He was an outstanding tour guide.

pared by third-party contractors. Under the shelter of the barn-like plant, workers construct as many as seven sections at a time, from the removeable wheel assembly up. Walking through sections parked on the lot for finishing we could imagine the future livability of the homes.

Thanks, Silvercrest, for a fascinating experience.



Minutes—12/4/94

President Becky Ragsdale called the Woodburn rally meeting of the GMC Cascaders to order at 9:03 am. New members, Ed and Thelma Olsen and Betty Hart and Martin Johnson received a warm welcome to the club. President Ragsdale recognized first time rally attendance by Tim and Cass Jones.

Abrahams, Henry & Lola	Morris, Terry & Gloria
Baxter, George & Carol	Olsen, Ed & Thelma
Becker, Earl & Marley	Ovens, Walt & Liz
Birch, Al & Karen	Perry, Don & Luana
Blaise, John & Louise	Politiske, Clem & Grace
Boyd, Terry & Joanne	Pryde, Gerald & Paulson, Anne
DeBauw, Ted & Alice	Ragsdale, Ken & Becky
Diers, Glenn & Ruth	Sawtell, Joe & Yvonne
Estridge, Clarence & Elsie	Scolman, Jim & Sheryl
Fry, Robert & Elaine	Seitz, Jim & Gerry
Frydenlund, Gordon & Carol	Smith, Cliff & Rosemary
Groth, Ray & Beverly	Sunderland, Bud & Joy
Hardin, Bill & Priscilla	Swanson, Ted & Jane
Johnson, Marvin & Hart, Betty	Thompson, Tom & Marge
Jones, Tim & Gloria	Van Allsburg, Robert & Bonnie
Krebs, Walt & Gerry	

Secretary's Report—The minutes of the Toppenish rally business meeting were approved as printed in the last newsletter... Moved by A. Birch, Seconded by E. Becker and Passed (MSP; Birch/Becker).

Treasurer's Report—Current treasury balance is \$4,044.66 attributable mainly to the annual influx of member dues. We currently list a membership of 182 coaches.

First Vice President's Report—Correspondence: Carol Baxter has sent letters of appreciation for assistance with the Toppenish rally to the Toppenish Police Department, the Toppenish Schools and the Yakima Nation RV Park. Laurie Miller and Herb Graham are reported to be ill; get-well cards are on their way to these members. A report on the well-being of Joe Baker indicated that he has recovered from a fall from the roof of the home he is building.

Historian: Cascaders have continued to do a great job of sending rally photos to Carol for the scrap books. However, she could use Toppenish photos covering club activities—no more shots of the murals, thank you.

Second Vice President—Wagon Master: Glenn Diers announced that plans move forward for the next rally to be held 2/17–20/95 at Tokeland, WA with Scolmans and Frydenlunds as hosts. A March 30 through April 3 rally is planned at Newport, OR's Pacific Shores. With the exception of the August rally at Wallowa Lake State Park, no firm plans are in place for the remainder of 1995. John and Lauree Miller and George and Alice Frank will host the

Wallowa rally—August 16–20. Wagon Master Diers seeks hosts and sites for 1995 rallies in June, October and December.

Sheryl Scolman requested volunteers to assist with greeting and parking at the Tokeland rally. Joy and Bud Sunderland signed up.

National FMCA Director's Report—Cliff Smith reported that recent FMCA action eliminated the proposed extra membership fee for Canadian members.

Old Business—

- Wagon Master Diers urged interested members to purchase Cascader flags and decals and GMC belt buckles from him. Ruth Diers, purveyor of club jackets, announced that they are now available in sizes through XX-large.
- A review of dates and locations of rallies for affiliated and related motorhome associations produced the following list: FMCA 3/9–11/95 at Las Cruces, NM; GMC International 3/26/95–4/1/95 at Myrtle Beach, SC; Western States 4/26–30 at Gilroy, CA; and GMC International 9/10–16/95 at Mt. Rushmore, SD.
- Elaine Fry reported on the Woodburn rally. Some late registrations were not accepted due to lack of space in the RV park. Members should recognize that our increasing numbers may pose similar problems in the future. Another concern derived from a non-Cascader complaint to the RV park management about possible violations of pet rules. Members were reminded that inadequate cleaning up after pets reflects badly on the entire group and may result in refusal by some parks to accept the club. There was, however, no evidence that Cascader dogs were "out of line."

New Business—

- President Ragsdale reported that the executive board had been discussing questions of business equipment for the club. There is an antiquated typewriter which we no longer use and there is a need for database software and a computer printer for use at rallies and for maintaining the club database. MS; G. Baxter/J. Krebs that the club authorize the executive board to proceed with purchase of a copy of FileMaker Pro (Mac version), not to exceed \$300, and a printer for use at rallies. The motion was amended to read that both items should be purchased with total price not to exceed \$1,000 (MSP; G. Baxter/C. Smith).
- Pris Hardin noted that several coaches continue to display the laminated, personalized coach labels produced for the Mount Hood rally. Members who joined since that event might wish to have similar signs for their coaches. Considerable interest was evident. She will present costs and possible design options at the Tokeland rally next February.

Adjournment was MSP; B. Fry/R. Diers at 9:45.



GMC Cascaders

Pris Hardin, Secretary
2970 NW Hayes Ave.
Corvallis, OR 97330



PLEASE MAIL
EARLY FOR
CHRISTMAS



Corvallis OR 97330

**COLORED STRIPE ON YOUR ADDRESS LABEL?
YOUR MEMBERSHIP LAPSES JAN 1**

**Ace and Friends Bring
Old-Timey Beat to Woodburn Rally**



Ace and Friends, an old-timey musical group, filled the hall with favorites. Cascaders joined in. Ace and his wife, Dorothy Wehus, hail from Canby. Mollala is home to the rest of the friends: Joy and Frank Smith and Jerry Smith—no relation to Joy and Frank. Frank impressed us by playing a wide variety of instruments while Jerry spiced up the evening's performance with narratives that brought down the house. Ace "sawed" away on an unusual, antique stringed piece called a violin-lute (*left*). Violin-harp might have been a more appropriate label; he was able to produce a delicate, bell-like tone that was perfect for several featured numbers. In spite of very close quarters in the club house, *Ace and Friends* managed to fit right in and produce a zesty evening of entertainment.

